



Welcome
to today's webinar



CULTURE CHANGE *in ACTION* **WEBINARS**

Sharing the Vision

APRIL 23, 2020

Long-Term Care Equality
Index (LEI): Introducing
Best Practices that
Strengthen LGBTQ
Inclusive Communities



Sherrill Wayland



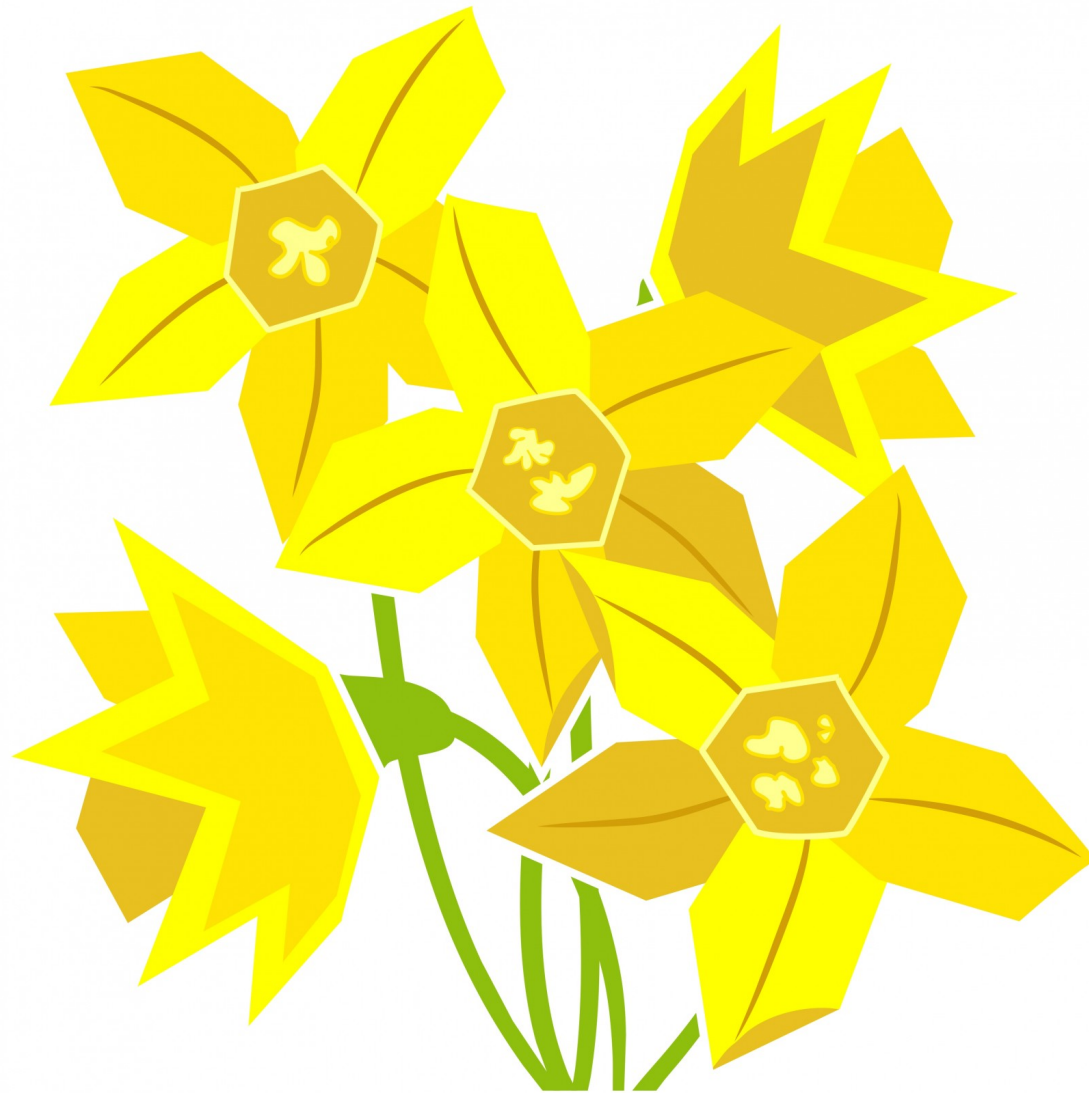
Dan Stewart



Sherrill Wayland, MSW
She/Her/They
Director of National Initiatives
SAGE



Dan Stewart, MSG
He/Him/His
Associate Director of Aging Equality Project
Human Rights Campaign Foundation



Thank You

Objectives

- Who are LGBTQ older people and what are their needs
- Understand the Long-Term Care Equality Index and its purpose
- Be able to describe and take the next steps towards LGBTQ-inclusivity

A Growing Population

- 3 million - 50 years old+
- Expected to double by 2030
- Located in 99.7% of counties
 - Greater percentage in rural communities
- An invisible population
- A history of stigma and discrimination



Older LGBTQ People Need Support

- Smaller social network
- Less likely to have children
- Less likely to be partnered
- More likely to develop chronic health conditions



The Long-Term Care Equality Index



The Long-Term Equality Index (LEI)

- National initiative
- Directed toward residential long-term care
- Based on Health Care Equality Index
- Informed by experts in LTC, aging, and LGBTQ policy and services



Framework



Benefits of the LEI

- Provide a welcoming environment
- Public recognition as a leader in LGBTQ-welcoming care
- Access to best practices
- Access to quality education and resources
- Improve ability to develop LGBTQ-inclusive marketing
- Technical assistance with meeting state and federal regulatory requirements

Next Steps

A Commitment
to Caring Pledge

Take the Self-
Assessment

To be Launched Spring '20

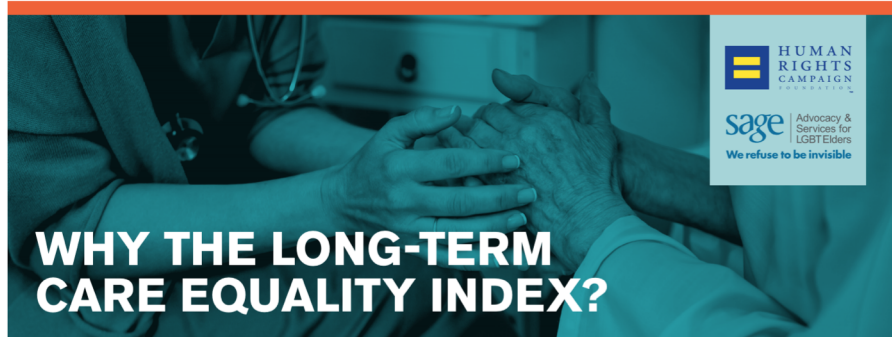
Take The LEI
Survey

To be Published May '21

Next Steps: Non-Discrimination Policy

“The Madlyn and Leonard Abramson Center for Jewish Life is a nonprofit organization and does not discriminate on the basis of race, color, national origin, religious creed, disability, age, gender, gender identity, sexual orientation or genetic information in admissions, referrals, or the provision of care or service.”

Resources



DEMOGRAPHICS

There are currently between 1.5 and 3.8 million adults over the age of 65 in the United States who identify as lesbian, gay, or bisexual¹(LGB) and this number is projected to double by 2030.² According to the 2010 census report, 99.3% of counties in the U.S. are home to LGB individuals, and estimates from The Williams Institute indicate that there are hundreds of thousands of older adults who are transgender³.

While older lesbian, gay, bisexual and transgender (LGBT) adults confront the same issues everyone else does when choosing aging services — where to live, how

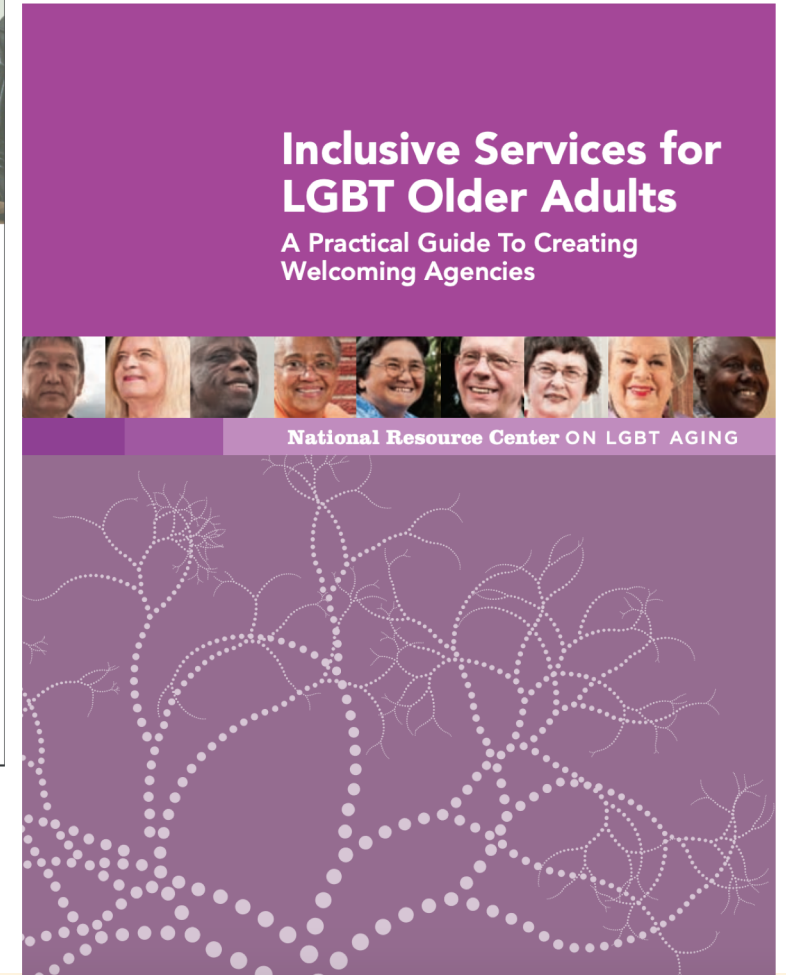
to afford rising costs of housing and healthcare, and how to stay with loved ones — the reality of life in long-term care for LGBT people can be drastically different from their non-LGBT peers. Stigmatization, lack of identity-affirming treatment and experiences of discrimination and violence can lead to avoiding necessary services, chronic stress and increased social isolation among LGBT older adults. Additionally, approximately 20 percent of LGBT older adults are people of color who as a group face increased health disparities, higher levels of stigma and have experienced more LGBT-related discrimination than their white counterparts, leaving them more at risk of not seeking or receiving the services they need.



LGBTQ AGING

The Case for Inclusive Long-Term Care Communities

sage | Advocacy & Services for LGBT Elders
We refuse to be invisible®



SAGEConnect

A volunteer phone support program connecting LGBT older adults with a SAGEConnect Caller.

Learn more at
www.sageusa.org/sageconnect



sage **CONNECT**
Who will you connect with?
sageusa.org/sageconnect



Inclusion is an Ongoing Process

Sign the Commitment to Caring Pledge, today!

www.TheLEI.org

Sherrill Wayland
SWayland@SAGEUSA.org

Dan Stewart
Dan.Stewart@hrc.org



Sharing the Vision
CULTURE CHANGE
in ACTION
WEBINARS



Pioneer
Network™

SHARING RESOURCES

ABCs of Combating Isolation

www.pionetwork.net/resource-library/



Hot Topics Series Webinars

THURSDAY, MAY 21, 2020

Growing Person-Centeredness

Empathy: The Key to Dementia Inclusive Communities

Guides:

Jessica Luh Kim, Director, Membership, Policy & Professional Development, Ontario Retirement Communities Association (ORCA)

Mary Beth Wighton, Co-Chair – Dementia Advocacy Canada (DAC) and Chair – Ontario Dementia Advisory Group (ODAG)

Erin Feutl, Manager, Policy and Professional Development, Ontario Retirement Communities Association

Penny Cook, President & CEO Pioneer Network



WELCOME
to today's webinar



**CULTURE CHANGE
in ACTION
WEBINARS**

Sharing the Vision

APRIL 23, 2020

**Long-Term Care Equality
Index (LEI): Introducing
Best Practices that
Strengthen LGBTQ
Inclusive Communities**



Sherrill Wayland



Dan Stewart



Sherrill Wayland, MSW
She/Her/They
Director of National Initiatives
SAGE



Dan Stewart, MSG
He/Him/His
Associate Director of Aging Equality Project
Human Rights Campaign Foundation





Thank You

Objectives

- Who are LGBTQ older people and what are their needs
- Understand the Long-Term Care Equality Index and its purpose
- Be able to describe and take the next steps towards LGBTQ-inclusivity



A Growing Population

- 3 million - 50 years old+
- Expected to double by 2030
- Located in 99.7% of counties
 - Greater percentage in rural communities
- An invisible population
- A history of stigma and discrimination



Older LGBTQ People Need Support

- Smaller social network
- Less likely to have children
- Less likely to be partnered
- More likely to develop chronic health conditions



The Long-Term Care Equality Index



Pioneer Network

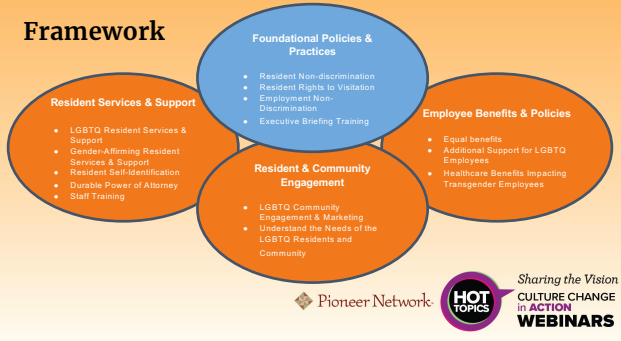
The Long-Term Equality Index (LEI)

- National initiative
- Directed toward residential long-term care
- Based on Health Care Equality Index
- Informed by experts in LTC, aging, and LGBTQ policy and services



Pioneer Network

Framework



Benefits of the LEI

- Provide a welcoming environment
- Public recognition as a leader in LGBTQ-welcoming care
- Access to best practices
- Access to quality education and resources
- Improve ability to develop LGBTQ-inclusive marketing
- Technical assistance with meeting state and federal regulatory requirements



Next Steps

A Commitment
to Caring Pledge

Take the Self-
Assessment

To be Launched Spring '20

Take The LEI
Survey

To be Published May '21



Next Steps: Non-Discrimination Policy

"The Madlyn and Leonard Abramson Center for Jewish Life is a nonprofit organization and does not discriminate on the basis of race, color, national origin, religious creed, disability, age, gender, gender identity, sexual orientation or genetic information in admissions, referrals, or the provision of care or service."



Resources



WHY THE LONG-TERM CARE EQUALITY INDEX?

DEMOGRAPHICS

There are currently between 1.8 and 2.0 million adults over the age of 65 in the United States who identify as LGBT. This number is projected to increase to 2.5 million by 2020. According to the 2015 survey, LGBT older adults are more likely to live alone, have lower income, and are more likely to be in long-term care facilities than their straight counterparts.

INCLUSIVITY

Inclusivity is the practice of treating and valuing people for who they are, not just for who they are not. It is the practice of creating a safe and welcoming environment for all people, regardless of their race, ethnicity, gender, sexual orientation, or gender identity. Inclusivity is a core value of the Pioneer Network and is essential to our mission of providing high-quality, person-centered care to all residents.



LGBTQ AGING

The Case for Inclusive Long-Term Care Communities

sage ADVOCACY & SUPPORT FOR LGBT OLDER ADULTS

HUMAN RIGHTS HUMAN RIGHTS FOUNDATION



Inclusive Services for LGBT Older Adults



A Practical Guide to Creating Welcoming Agencies

Pioneer Network

SAGEConnect

A volunteer phone support program connecting LGBT older adults with a SAGEConnect Caller.

Learn more at www.sageusa.org/sageconnect

Pioneer Network

Inclusion is an Ongoing Process

Pioneer Network

Sign the Commitment to Caring
Pledge, today!

www.TheLEI.org

Sherrill Wayland
SWayland@SAGEUSA.org

Dan Stewart
Dan.Stewart@hrc.org

Pioneer Network





SHARING RESOURCES

ABCs of Combating Isolation

www.pioneernetwork.net/resource-library/



Hot Topics Series Webinars
THURSDAY, MAY 21, 2020

Growing Person-Centeredness

**Empathy: The Key to Dementia
Inclusive Communities**

Guides:
Jessica Luh Kim, Director, Membership, Policy & Professional
Development, Ontario Retirement Communities Association (ORCA)
Mary Beth Wighton, Co-Chair – Dementia Advocacy Canada (DAC)
and Chair – Ontario Dementia Advisory Group (ODAG)
Erin Feutl, Manager, Policy and Professional Development, Ontario
Retirement Communities Association
Penny Cook, President & CEO Pioneer Network

Pioneer Network

Long-Term Care Equality Index (LEI): Introducing Best Practices that Strengthen
LGBTQ Inclusive Communities Webinar
April 23 2020

[Resources for Inclusive Long-Term Care for LGBTQ Older Adults](#)

[Why the Long-Term Care Equality Index?](#)

[LGBTQ Aging: The Case for Inclusive Long-Term Care Communities](#)

[Inclusive Services for LGBT Older Adults: A Practical Guide to Creating Welcoming Agencies](#)

[Why “LGBTQ-Welcoming” will soon be a hallmark of the most successful senior living communities: A primer for operators, marketers, & leadership](#)

[Link to additional resources and reports...](#)

[COVID-19 & the LGBTQ community](#)

[The Lives and Livelihoods of Many in the LGBTQ Community are at Risk Amidst COVID-19 Crisis Report](#)

[COVID-19 and LGBTQ Older People Issue Brief](#)

[Resource for LGBTQ Elders](#)

[SAGE National Elder Hotline](#)

877-360-LGBT (5428)

[Presenter Contact Information](#)

Sherrill Wayland, MSW

SAGE USA

SWayland@SAGEUSA.org

Dan Stewart, MSG

HRC Foundation

Dan.Stewart@hrc.org



Promoting our Vision
A Culture of Aging that is Life-Affirming, Satisfying, Humane and Meaningful

CERTIFICATE OF ATTENDANCE

Sharing the Vision Webinar Series

COURSE TITLE

***Long-Term Care Equality Index (LEI):
Introducing Best Practices that Strengthen LGBTQ Inclusive
Communities***

Sherrill Wayland, Director of National Education Initiatives. SAGE
Dan Stewart, Associate Director, Aging Equity Project, HRC

DATE: Thursday April 23, 2020

TIME: 2:00PM – 2:45PM EST

.75 CE

Attendee: _____

Pioneer Network Director of Education: